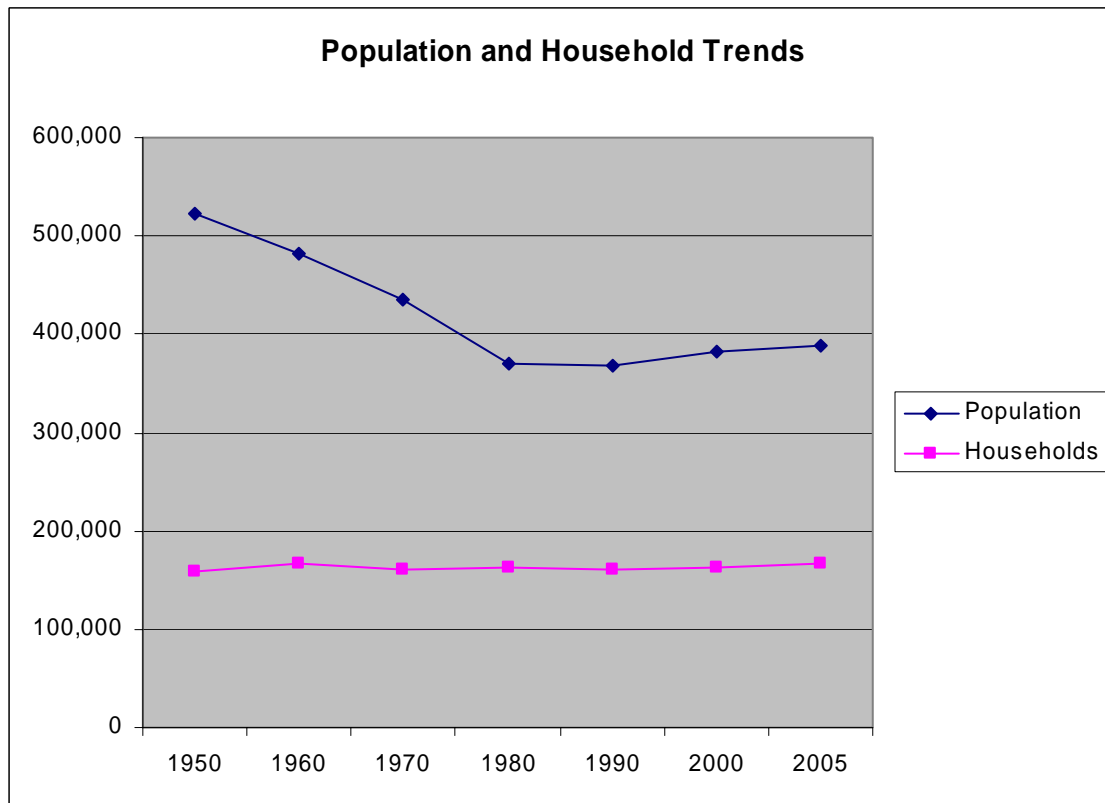


## Minneapolis Population and Household Change: 1950-2005

Population in Minneapolis declined from its peak in 1950 through 1990. Since then, it has grown at a modest rate. The population is now at 74% of the 1950 level.

By contrast, total households in Minneapolis has remained fairly constant during that time, even increasing some. Households are now at 105% of the 1950 level.

This has been mirrored by a decline in percentage of households with children – from 35% in 1960 to 23% in 2000.

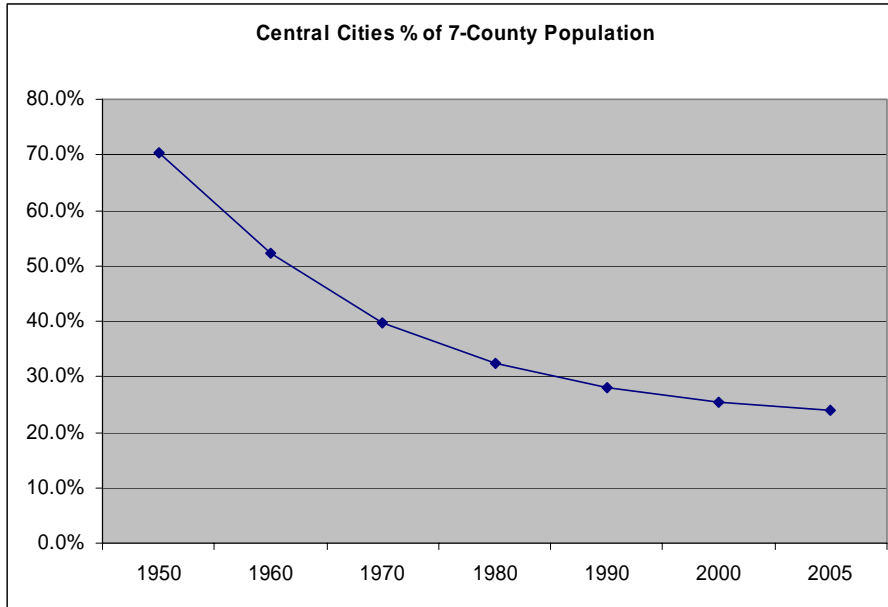


	1950	1960	1970	1980	1990	2000	2005
Population	521,718	482,872	434,400	370,951	368,383	382,618	387,711
Households	159,345	165,791	161,141	161,858	160,682	162,352	166,595
Population/HH	3.08	2.80	2.58	2.19	2.19	2.25	2.23

Sources: US Census, Minnesota State Demographic Center

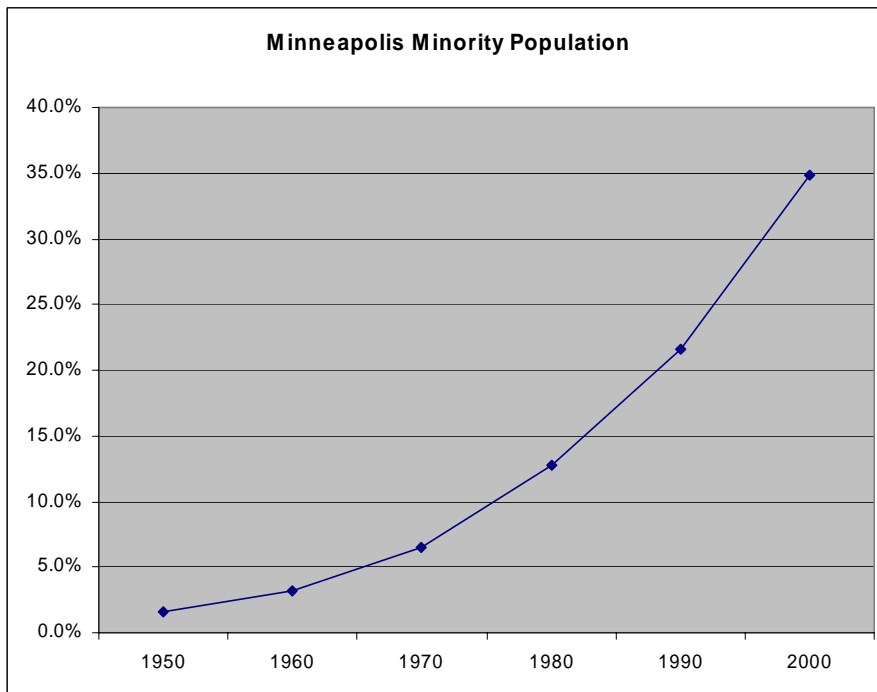
## Decreased concentration...

The percentage of the population in central cities (Minneapolis and St Paul), compared to the region as a whole, has declined over the past 50+ years.



## ...but increased diversity

The population of Minneapolis has grown increasingly diverse over the same time period.



Sources: US Census, Minnesota State Demographic Center